

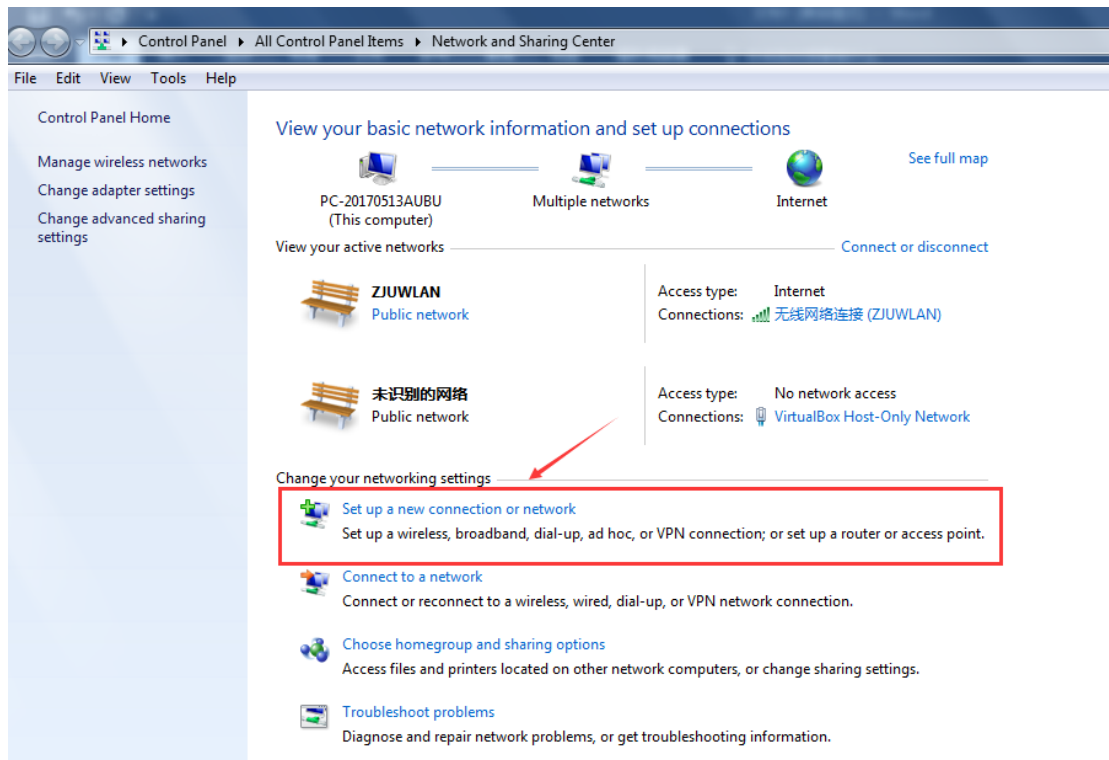
如何在 Win7 系统中使用 eduroam

1. 首先确保 eduroam 在信号覆盖范围内

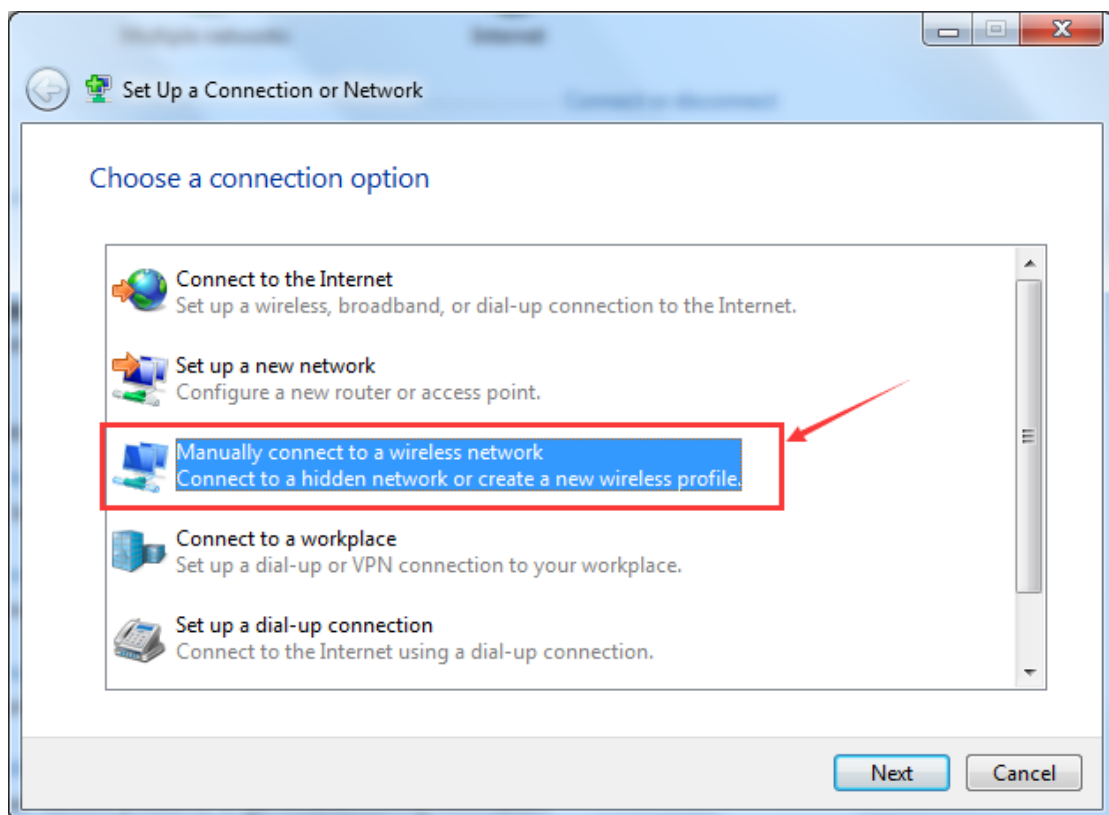


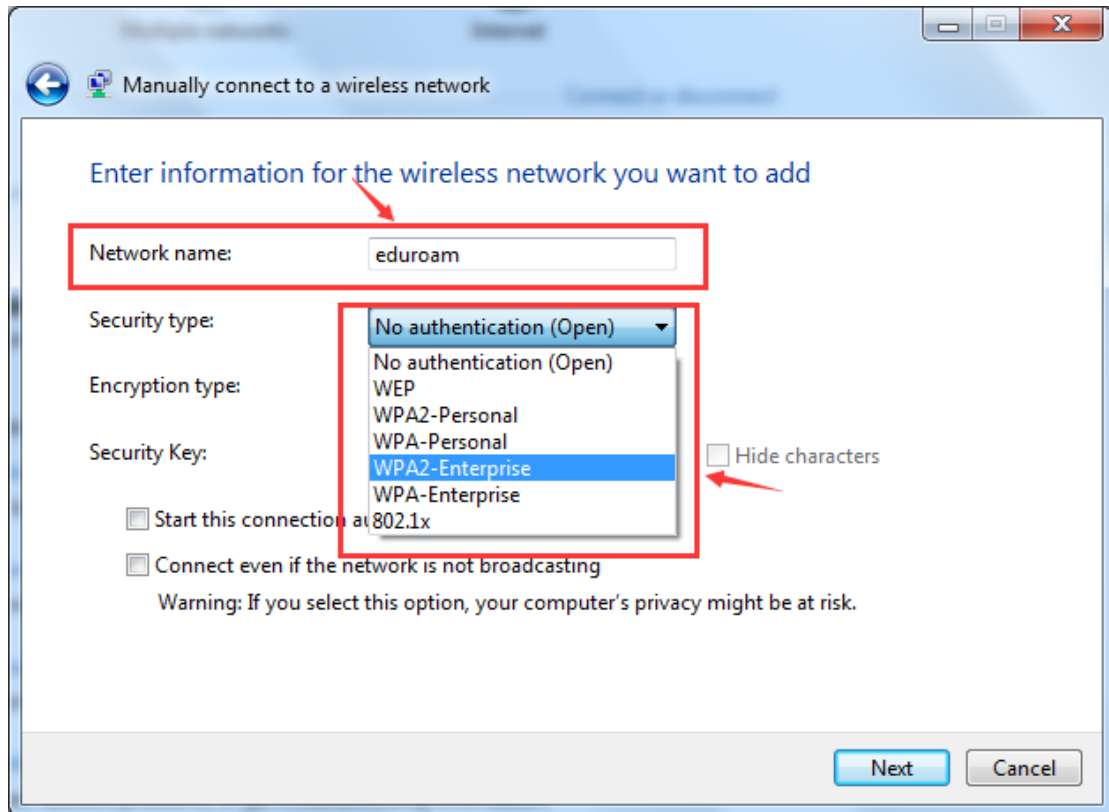
2. 打开 Network and Sharing Center, 选择 Set up a new connection or network



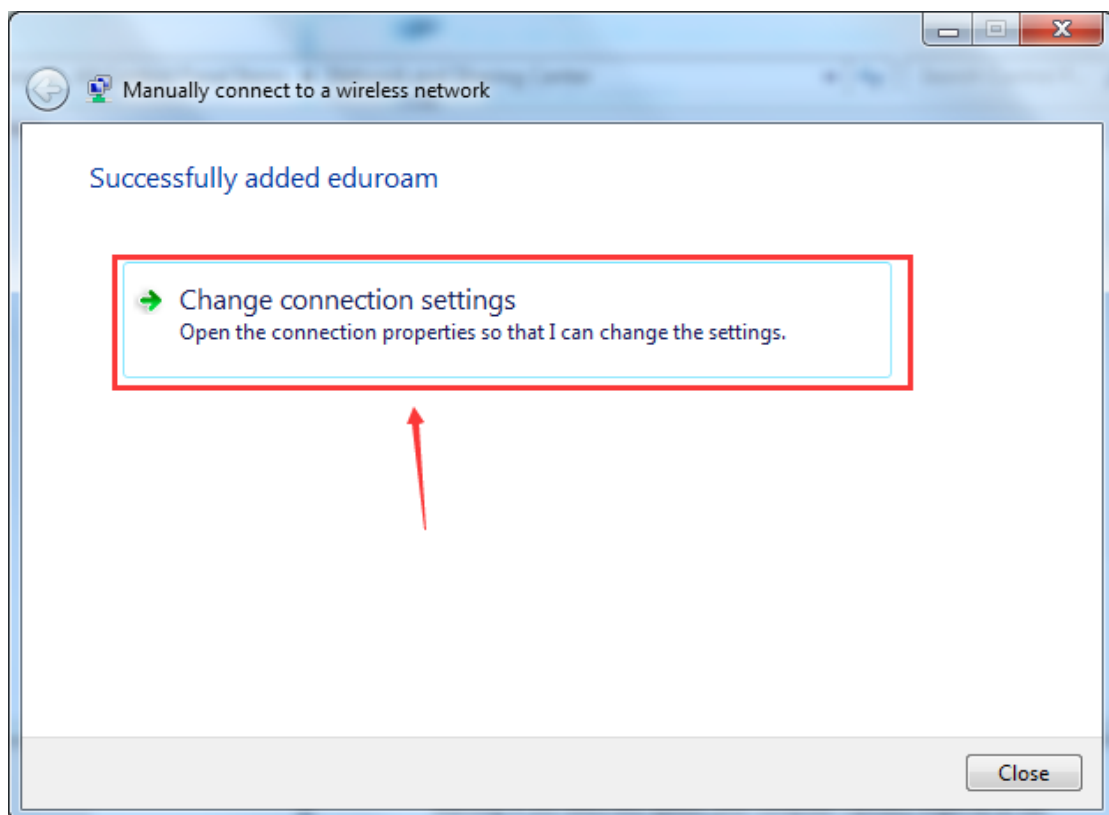


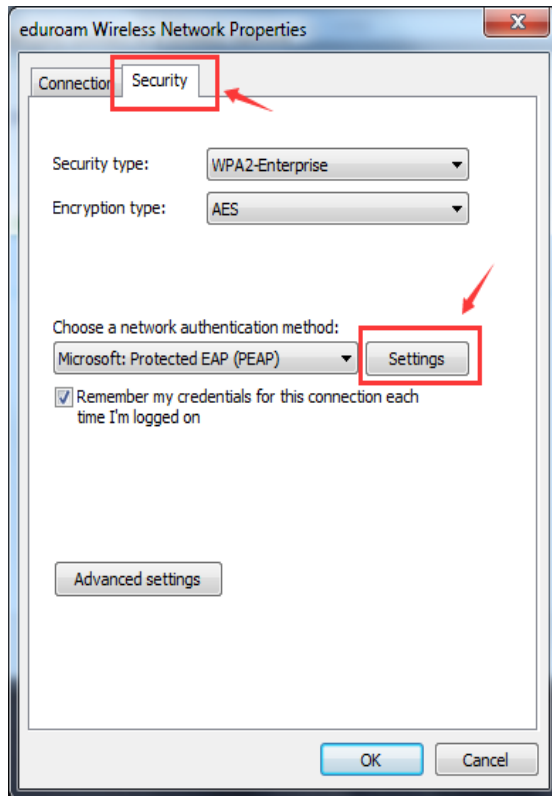
3.选择 Manually connect to a wireless network, 输入 network 名称为 eduroam, security type 为 WPA2-Enterprise



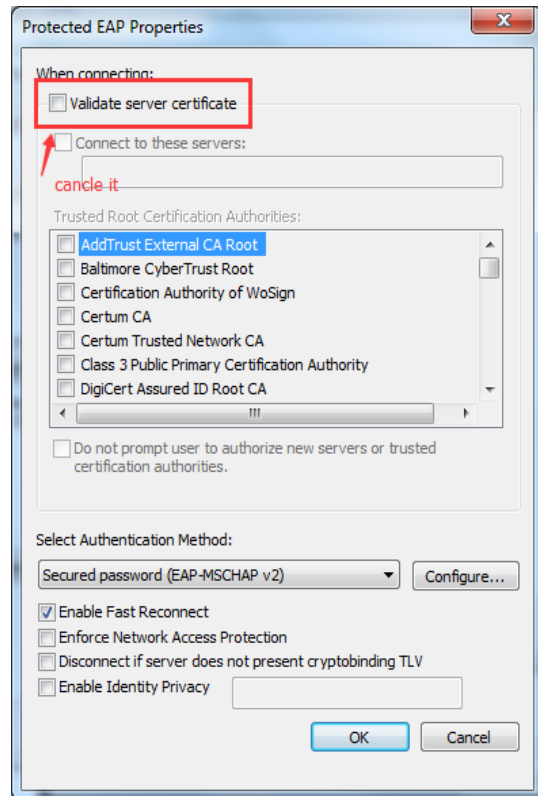


4.选择 Change connection settings, 并按以下步骤进行修改

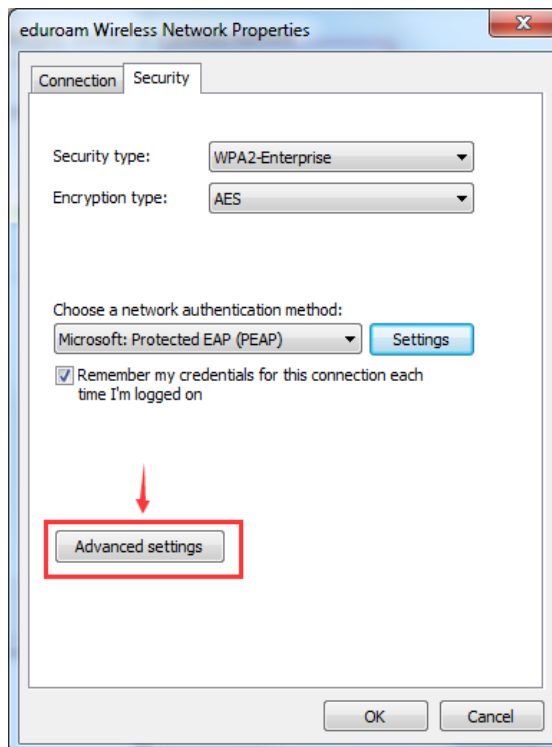




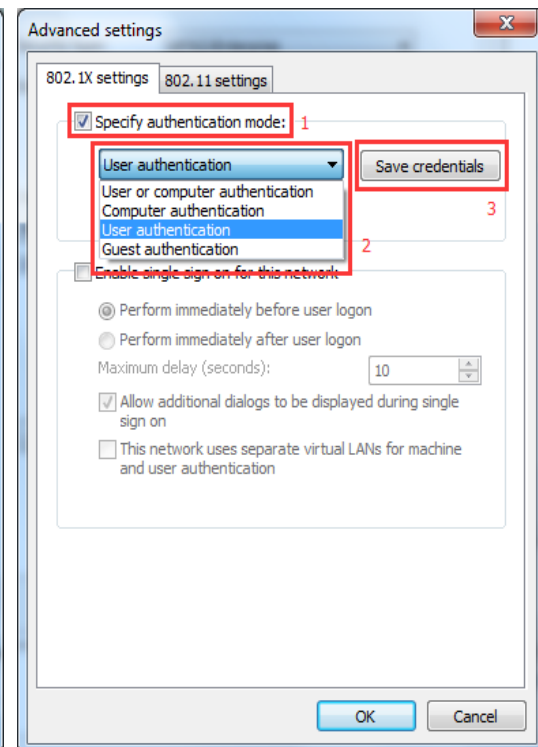
1



2

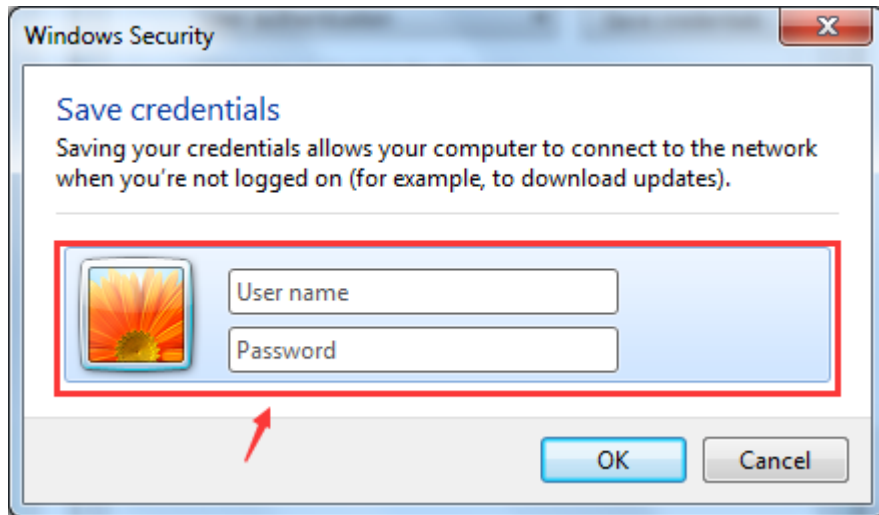


3



4

5. 输入校园网的账号密码，完成后去连接 eduroam 即可



如果之前已经连接过 eduroam 但是没有成功，先按下述步骤删除此 WIFI，再根据上述步骤重新连接

1.进入 Network and Sharing Center



2. 选择 Manage wireless networks, 点击 eduroam, 选择 remove

