



INTERNATIONAL CAMPUS  
ZHEJIANG UNIVERSITY  
浙江大学国际联合学院

**iLINK**  
MAGAZINE

Issue 1, Spring 2017

Sharing news, services and stories across Library and Information Center



**INITIAL ISSUE**



**international  
Library  
Information  
Knowledge**

**New  
Services**

page 1

**IT  
Focus**

page 2

**Library  
Focus**

page 7

**Story -  
LIC people**

page 13

# Editorial

I'm really pleased to announce the birth of iLINK magazine published by Library and Information Center. It aims to build a further link between our campus and students, as well as our faculty and staff, with more international approaches.

The iLINK is abbreviation standing for "international Library and Information Knowledge". Under era of globalization, the library and information technology becomes a tool to link people in our society. Studying in the library, we are linked by knowledge; Contacting with strangers, we are linked by internet; Discussing with fellows, we are linked by ideology. It is not only a link between physical contents but also a link between information, knowledge and human beings. In this magazine, we introduce the services offered by Library and Information Center, as well as the stories behind it, the latest updates, the recipe of using it. As its name, the magazine undertakes the link between YOU and ME, let alone to bring more excellent information services.

Editor-in-Chief: Xiaoqiang Jiang

Executive Editor: Xiaolin Wu

Deputy Editor: Guogang Chen  
Jinghan Huang  
Linpei Yang  
Qi Chen  
Zhaozhao Shao  
Zhuowei Li  
Zonghuan Zhang

Text Editor: Zhaozhao Shao

Art Editor: Xiaolin Wu

iLINK on the Web:

Cover image: Qiang Lu  
Learning and Teaching Building A

If you require this publication in an alternative format, please contact IT Service on 0571-87572669 (24/7) or email [ilink@intl.zju.edu.cn](mailto:ilink@intl.zju.edu.cn)

## SUBMISSION DETAILS

If you would like to submit an article, or tell us about some news, please email:  
[ilink@intl.zju.edu.cn](mailto:ilink@intl.zju.edu.cn)

To keep up to date with LIC news:  
<http://its.intl.zju.edu.cn>  
<http://lib.intl.zju.edu.cn>

New services launched in the International Campus

## ITS Website Launched in May

### Find what you truly need:

The updated ITS website has better organized content structure. New students and staff can find information through its channel, which helps them to locate relevant services rather than searching all information.

### Right person for help:

Rather than giving a general contact information, our service have more precise user guidance.

### New features:

Besides, new features have been added such as “news”, “resource download”, “application system introduction”, “newsletter”, “iLINK magazine”.



<http://its.intl.zju.edu.cn/>

## IPv6 on Campus

IPv6 is the next generation of the Internet Protocol (IP) address standard that will supplement and eventually replace IPv4.

Currently, Both wired and wireless network in the campus have already enabled IPv4 and IPv6 dual stack, we have enabled IPv6 to access China's next generation Internet project CERNET2 through the Zhejiang University campus network.



KEEP  
CALM  
AND  
ENABLE  
IPv6

ITS has been working to:

- Enable our Core Network for IPv6 connectivity.
- Manage the existing IPv6 addresses assigned to the university.
- Assist units with setting up IPv6 connections, as not all devices provide the tools to connect seamlessly.

Notes: IPv6 is still experimental at the university.

## Collaboration with OneNote



OneNote Mobile gives you instant access to your notebooks on your smartphone or tablet.

While OneNote Mobile doesn't include all the features of OneNote 2013, it's a great way to view and edit your notes on the go, and even share them with others. It's also a quick and lightweight option for using OneNote whenever you can't bring your laptop – or you don't want to.

## Survey Platform is Ready to Use

The service is easy to use, instant publication with international campus official domain([survey.intl.zju.edu.cn](http://survey.intl.zju.edu.cn)). It can be used in scene such as student or staff satisfactions, teaching feedback, opinions collection, psychological evaluation, voting poll and so forth.



INTERNATIONAL CAMPUS  
ZHEJIANG UNIVERSITY  
浙江大学国际联合学院

Students Faculty & Staff myZJU 简体中文

ABOUT ADMISSIONS ACADEMICS RESEARCH CAMPUS LIFE JOIN US

**International Learners Today, Global Leaders Tomorrow: International Undergraduate Programs in Engineering Begin**

Apply Now

**International Campus Website: <http://www.intl.zju.edu.cn>**

## NEWS

More &gt;



**UIUC Conducted the First Teaching Quality Assessment at ZJUI**

2017-04-26

From April 23th to 26th, 2017, UIUC conducted the first teaching quality assessment at

[read more](#)



**Symposium on Overseas Chinese Studies was Held at**

2017-04-25

On April 22nd and 23 rd, the Symposium on Overseas Chinese Studies, co-organized by School

[read more](#)



**Professor He Lianzhen was Appointed as Executive Vice Dean of**

2017-04-13

On April 12th, 2017, International Campus held its Meeting of Cadres, during which

[read more](#)

OFFICIAL  
WEBSITE

*of*  
International  
Campus

The official website is the entrance of all the information services of the International Campus Zhejiang University. We are trying to design the website with international standard of visual and content structure, and on the principles of User-friendly, Open and Transparent. The website supports easy switching between Chinese and English.

### Sub-websites

ZJE Institute: <http://zjue.intl.zju.edu.cn/>

ZJUI Institute: <http://zjui.intl.zju.edu.cn/>

China Studies: <http://csp.zju.edu.cn/>

Residential College: <http://residential.intl.zju.edu.cn/>

Campus Operation Center: <http://coc.intl.zju.edu.cn/>

International Campus Library: <http://lib.intl.zju.edu.cn/>

Information Technology Service: <http://its.intl.zju.edu.cn/>

### Identity portals

Student: <http://www.intl.zju.edu.cn/en/head-nav/students>

Faculty: <http://www.intl.zju.edu.cn/en/head-nav/faculty-staff>

Identity portal is the interface where you can find different kinds of services related to your identity. For example, if you are a staff, you may find information like Human Resource policies there.

### myZJU

<http://www.intl.zju.edu.cn/en/myzju>

myZJU is the personal portal of the website. When you login in, you can see information related to yourself there.



# OFFICIAL WEBSITE

*of*

## International Campus

### Service Updated

Recently, we update Human Resource and Finance service. You can find the entries in:  
<http://www.intl.zju.edu.cn/zh-hans/head-nav/faculty-staff>

- **Human Resources**  
You will find information like Guide for new Faculty & Staff, foreign expert service, and information about social insurance.
- **Finance**  
You will find information about Guide for re-mitting money, Guide for reimbursement and the Taxing rules, etc.

### 3 Tips of Using Website

- **Navigate to Office 365 login page quickly**  
We provide easy access by a quick link on the top right of the official website.  
Also, you can use the following url:  
<http://office365.intl.zju.edu.cn/>

- **List all the service in the website**  
The A-Z page lists all the services in the website, in alphabetic order.

- **Add Event to your Outlook Calendar**  
For any events in Meeting Calendar in myZJU, you can add it to your personal Outlook calendar with 2 clicks.

Blackboard Platform Training  
15:00 to 16:00

Participants: Relevant faculties of Language Center and the two joint institutes  
Location: Room 425, Learning and Teaching Building North A

Add to Calendar

A B C D E F G H I J K L M N O P Q R S T U V W X Y Z

### New Features coming

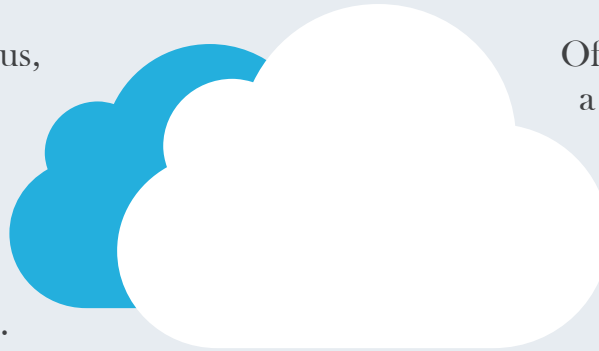
Recently, we have made following improvements for the site:

- Newly designed Campus Life and Admissions sites.
- Staff can use SharePoint calendar to populate Meeting Calendar entries in myZJU.
- You can share news or events to WeChat Moments on the pages by scanning the QRCode.
- Newly development directory, with enhanced user experience and functionalities.

# OFFICE 365

## The way to work smarter in the Cloud

The International Campus, Zhejiang University provides full-time students, faculty and staff with access to Microsoft Office 365 ProPlus services and applications.



Office 365 ProPlus features a full version of Microsoft Office, which includes: Word, PowerPoint, Excel, OneNote, Outlook, and more.

Your Office365 account is a Microsoft account that provides access to Microsoft Office 365 services and applications, including Office 365 ProPlus. With this account, you can install the latest version of Microsoft Office 365 ProPlus on up to five (5) personal computers and/or mobile devices. You also receive access to Microsoft Office Online and 1 TB of storage on OneDrive, Microsoft's cloud data storage and collaboration solution.



- **Microsoft Office Online:** Access the online version of Microsoft's productivity suite to create, edit, and share documents through your web browser from any location.
- **Microsoft OneDrive for Business:** Receive 1 TB of data storage on OneDrive for Business, Microsoft's cloud data storage and collaboration solution. You can access OneDrive through your web browser, use installed Office 365 ProPlus apps to save and retrieve files on personal computers and mobile devices, and sync OneDrive to your local file directories.

- **Microsoft Office 365 ProPlus for Personal Computers:** Office 365 ProPlus is one of the subscription service plans in the new Office, it enables flexible new deployment options that IT and/or individual users can choose from to install Office.
- **Microsoft Office 365 for Mobile Devices:** Download the Office 365 ProPlus to your mobile devices, including iPhone, iPad, Android Phone and Tablet, and Windows Phone.

# OFFICE 365

## Connect to the **NETWORK**



International campus provides various kinds of network accessing services, including Wi-Fi, eduroam and VPN.

The Network's core feature is:

- It is a part of ZJU campus network, it enables us visit countless research resources across the globe.
- 10 GB high-speed bandwidth between INTL campus and ZJU.
- Both wired and wireless network are designed to support non-perceptible network connect based on portal authentication method.

## ZJUWLAN

Throughout the campus, the primary wireless Service Set Identifier (SSID) is listed as "ZJUWLAN."

In most cases, once you properly configure your laptop, tablet, or phone to connect to ZJUWLAN, you will be able to automatically connect to Internet everywhere on campus without having to log in again.



eduroam (education roaming) is a secure worldwide federated network access service developed for the international research and education community. This service provides per-user, per-session encrypted network access for visitors from participating institutions, without the need to gain guest credentials on arrival to an eduroam enabled location.

eduroam website: <https://www.eduroam.org/>

## Key Features and Benefits of Eduroam

- When a visiting user requests access to the eduroam SSID at International Campus with their appropriate login username@institution\_domain, the eduroam system will proxy their credentials to their home institution for authentication, and, if acceptable, will provide immediate access to wireless environment without further registration.



# ITS

Delivering Responsive, Reliable and Remarkable IT Service across the Campus.



Just give us a call at: **0571-87572669** or come to Learning&Teaching Building North **B112** for immediate tech support.



The 24/7 IT Support technical engineers are available in person, by phone, or over chat to assist you with campus applications and services or to help you with your personally owned computer or device. The center also provide information such as the location of campus computer labs, the availability of variety systems, and information about obtaining off-campus assistance.

## Services available include:

- Supporting applications such as Mail, myZJU, Self-Service Printing and NetID.
- Troubleshooting problems on student, faculty, or staff computers
- Installing and uninstalling operating systems and software.
- Installing wired or wireless Ethernet cards.
- Troubleshooting network problems.

## Self-service Printing System Online

NO USB, NO CASH, ALL YOU NEED IS A **CAMPUS CARD**

The self-service printing project has been officially launched on Mar 1st. If you see a logo like this in the campus, that's our self-service print station.



- **Cloud Printing**  
Upload your file on web.
- **Local Printing**  
Install the print client and print the file conveniently.
- **Email Printing**  
Send the file as attachment to [print.intl@zju.edu.cn](mailto:print.intl@zju.edu.cn)  
Upload your file by computer or cellphone, then you can print it without USB, staff, and cash. When you need your file, just find a print station and scan your campus card to print it.

More information can be found on <http://print.intl.zju.edu.cn/>



The international campus adopts PeopleSoft Campus Solution as the management platform for academic affairs. This solution:

- Fully support credit system and small class teaching.
- Fit the one-to-many character of our college structure by using a versatile architecture.
- Is a complete solution that can support all the academic activities that students involved.
- Is used by top 10 universities in the world.

Our team is continuously customizing the platform to offer better experience for all the users.

## INTERVIEW

In this interview, you can see the most concerned questions of the library from students, and you can find answers from the library.

## library

Library Website: <http://lib.intl.zju.edu.cn>

## About Time

Q: When will the library be open?

A: We know you must be very curious about the open day. Well, we're afraid that the library will officially opened in September, when the next semester begins. But, the good news is, in the middle of May, the library will be able to visit, and books in the library can be borrowed as well.

Q: What is the opening time of the library

A: The opening time is from 8:30 to 22:30 everyday in the earlier stage considering the energy wastage.

## About Resources

Q: How many books are there in the library?

A: The collection capacity of our campus library is around 300,000. In September of this year, there will be 50,000 books in our library; In 2020, the number can reach to 100,000. And our University has 7 branch libraries collecting over 6,000,000 print collections, including 180,000 ancient books.

Q: We are wondering about the book classification. How many specialized books will be in the library? Are there any general books?

A: We attach great importance to liberal education as well as specialized knowledge. Therefore, 50% collections are in science and engineering, 40% of books are about humanities and social science, the left 10% will be series of books.

Questions about  
Library Time  
and Resources



# library INTERVIEW



## About Space

**Q:** Is our library an octagon? It looks quite different from other buildings.

**A:** If you come into the library, you can see a reflection of dome shining on a square yard, in accordance with the old Chinese idea that the Earth was square and Heaven was round.

**Q:** How many people can stay in the library at the same time?

**A:** There are 600 seats in the library and a few more in the book bar inside the library.

## About Activities

**Q:** How can we organize activities with our library?

**A:** Well, the simplest way of organizing activities with library is bring your plans to us, and we can scheme activities together.

**Q:** Does our library need student assistant?

**A:** Yes we do. We'll recruit student assistant every year in Sep. and Oct. You are all welcomed to join us. Now we have 7 student assistants in the library temporary service room, and we need more after the new library opens.



“

## Can't find books? Try E-resources!

”

If you can't find books either in our library or in other branch libraries of Zhejiang University, why not try our library e-resources. Our library has collected 1,700,000 e-books, 80,000 e-journals and you can use over 400 databases through our library access, including PubMed, Web of Science, Springer...



PubMed comprises more than 27 million citations for biomedical literature from MEDLINE, life science journals, and online books. Citations may include links to full-text content from PubMed Central and publisher web sites.

Academic

Database

E-journals

If you need some digital resources, please try to click Academic Search, Database Search or E-Journals. Enormous digital resources which have been purchased by ZJU Library are waiting for you.

## Web of Science

Web of Science is an abstract database. It collects over 12,000 world authoritative and high-impact academic journals, which covers a lot fields, such as nature science, engineering technology, biomedicine, social science, arts and humanities. It also collects reference cited of papers and compiled into unique citation index.

# Hey, My Library

## All You Need to Know about Library

-- As a ZJUer, you have your own ID to own a private library which is called My Library but not concrete.

- **Check personal information**

Once you log in My Library by using private ID and password, it's easy for you to check you personal information, your loans, your tags etc.

- **The book is not here? RESERVE it!**

Except these mentioned above, you guys can reserve on loaned books or on-the-shelf books which are in other branch libraries of the university. E-mails and messages will be sent to you when reservation books arrive.

- **Can't find the book in ZJU Library? RECOMMEND it!**

If you have a strong desire for one book which unfortunately is not in all ZJU Libraries. Please log in My Library and it offers you an access to recommend it. Please attention, international library highly recommends a more effective approach by visiting international library website <http://lib.intl.zju.edu.cn/> and clicking "Recommending Books" to help you meet your requirements.

- **Document Delivery Service**

According to users' retrieval requirements, library website has sorted the access books, academic information, databases and E- journals.

### Print Books

Basically you can retrieve print book information by Library Catalog so that you could get the information about Call Number and Book Location which help you to determine the book location. So just go to library and take it.

### Digital Resources

If you need some digital resources, please try to click Academic Search, Database Search or E-Journals. Tremendous amount of digital information which have been purchased by ZJU Library are waiting for you.



- **Leave a Message and Recommend Books to us**

Please visit international campus library website and click ' Leave Message ' or ' Recommending Books ' so that you have access to convey your demands. Compared with recommending books by My Library which mentioned before, it's more effective for international students, faculty and staff to meet your book resource demand.

LIBRARY SERVICES

# TEXTBOOK SERVICE

In order to thoroughly implement the concept of international school-running, the textbook management in international campus ZJU is following international partners' management models. Library provides textbook service here.

## Voluntary Ordering

Based on the principle of voluntary ordering, students can voluntarily select access to textbook on Specialized course, except textbook on public course, such as PE and English course.

## Order on PeopleSoft

Students are convenient to order textbook voluntarily while they are selecting course on PeopleSoft which helps students manage course. By this way, it is much easier for students to choose corresponding textbooks.

## Free Rental Service for Freshmen

To overcome the textbook problem caused by the time pressure, international campus provides free textbook rental service to freshmen at first semester.

### Specialized Textbook List

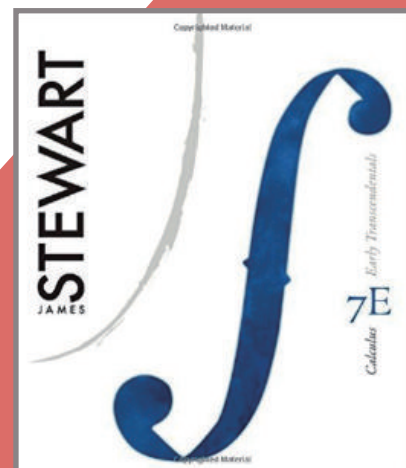
- Calculus:Early Transcendentals
- Chemistry
- Introduction to Computing Systems
- Campbell Biology
- Calculus for biology and medicine
- Chemistry for Biologists
- Molecular Biology of the Cell



Campbell Biology

## Price too High? Much Cheaper in Library!

Considering the high price of foreign textbooks, library gives priority to international edition which remain basically the same with native edition but much cheaper. At the same time, library is persuading textbook agent for the biggest discount so that students can relieve the pressure of textbook as far as possible.



Calculus





## A Reading Room in Residential College

Currently, our library is under construction and we have a temporary reading room in the Residential College Room106. There are 3,500 books and 18 periodicals in the reading room, the capacity of the room is around 25. It is a small but lovely room for study before the main library opens.

# Awesome Student Assistants



## in the Library

“

Who are we?  
We are passionate  
helpers,  
we are stars of the  
library.  
You can find us at  
any moment.  
We serve you with  
all the passion .

”

From left to right: Sun Jintao, Shen Xiangwei, Li Wenyue,  
Huang Jinghan, Chen Yifan, Yang Chen, Yan Yiyang



**Xiaoqiang Jiang**

“ Live and work in our campus, with a exciting sense -- beautiful, exclusive, elegant, and perfect. ”



**Guogang Chen**

Do what you say,  
Say what you do!



**Zonghuan Zhang**

“ It takes a long time to grow young. ”



**Zhaozhao Shao**

Toward the sun as long as they do not see the shadow.

LIC   
People



**Qi Chen**

I am a passionate IT professional with over 5 years of hands-on experience with Cloud and Server technologies, IT solution design, and system administration.



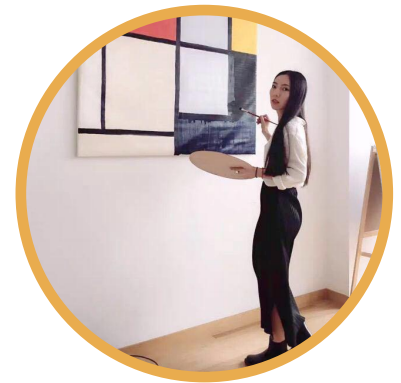
**Zhuowei Li**

My favorite programming language is C#. Besides computer science, I also have strong interests in social sciences.



**Linpei Yang**

“ Yesterday is history. Tomorrow is a mystery. But today is a gift. That is why it's called the present. ”



**Xiaolin Wu**

I am always doing that which I can not do, in order that I may learn how to do it.