

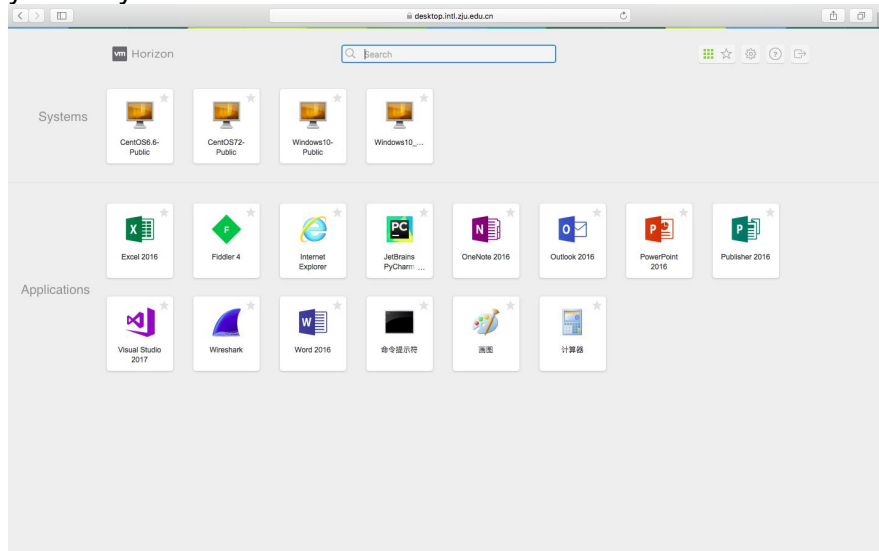
# How to use VDI (Virtual Desktop Interface)?

There are two ways to get your virtual desktop.

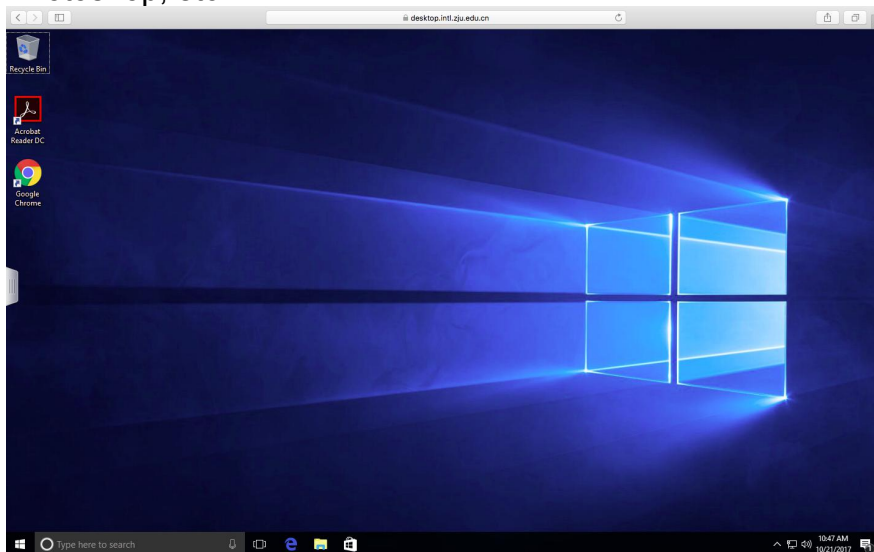
1. You could visit **HTML Access via: [desktop.intl.zju.edu.cn](http://desktop.intl.zju.edu.cn). And login with your INTL ID.**



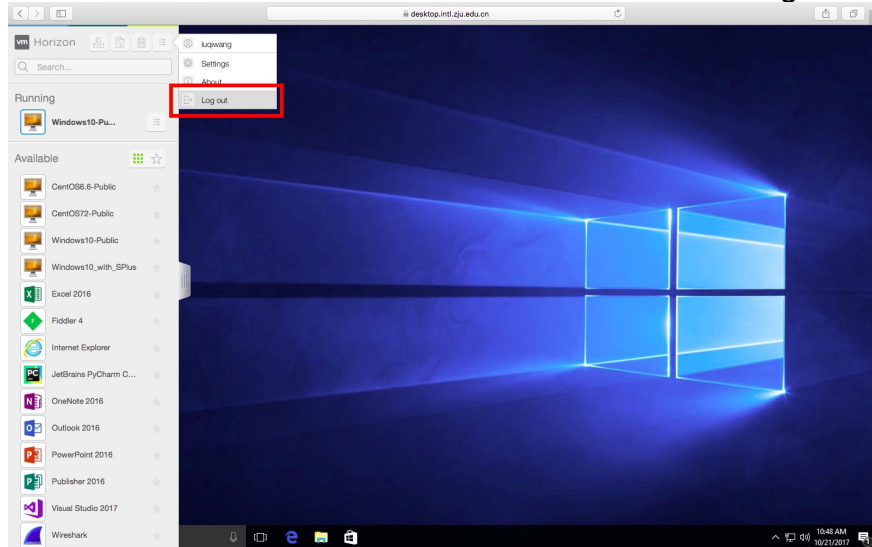
Once the connection has been established, you will see various applications and systems you need.



A basic Desktop will be equipped with a Google Chrome, Acrobat Reader, office suit, Photoshop, etc.



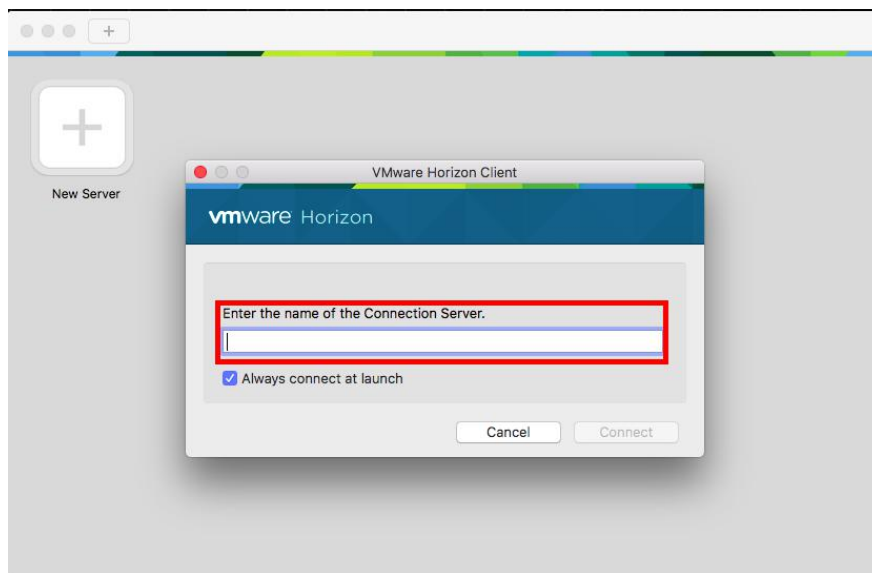
You could find various functions in the tool bar including the log out option.



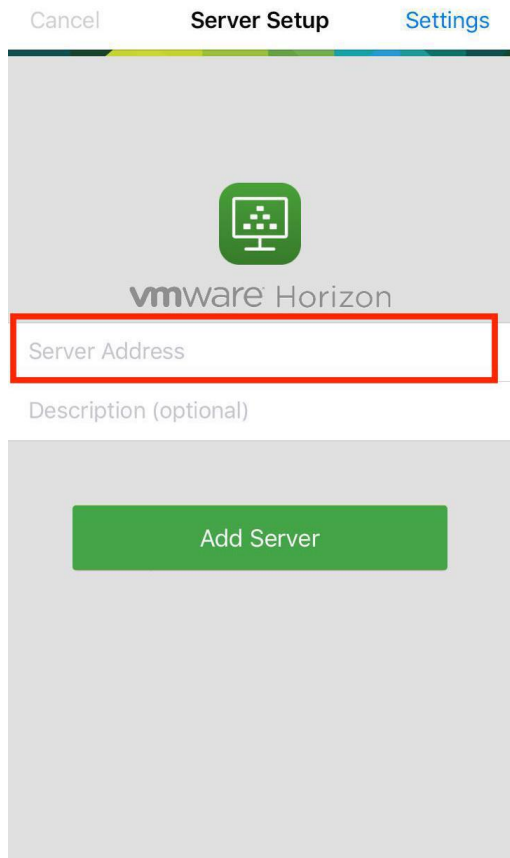
**2. Also you could download a Virtual Desktop Client via <http://its.intl.zju.edu.cn/en/download>.**

The Client is supported in Windows, Mac, Ubuntu Linux operating systems, Apple iOS and Android tablets/phones.

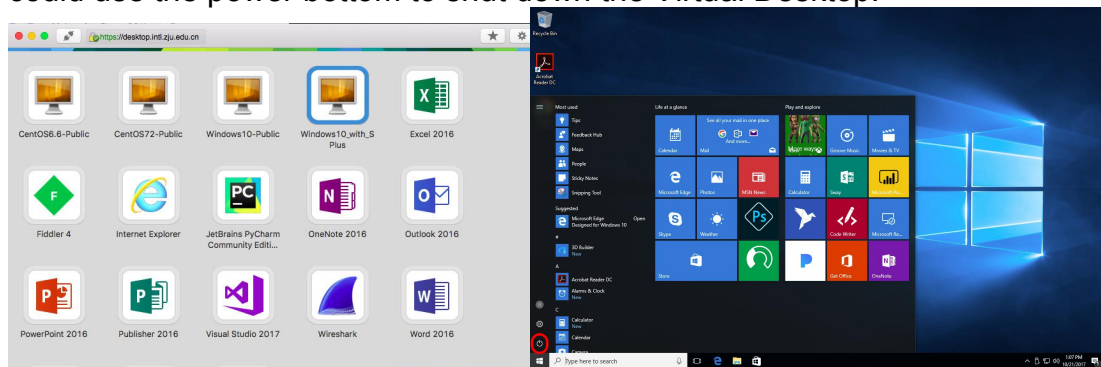
At the first time you download a client and you may should set the Connection server, use **desktop.intl.zju.edu.cn**. When prompted to log in, use your **INTL ID and password**. The



(PC)



The PC operating interface will be a bit of different with the HTML Access but still easy to use since you have a tool panel on your devices. If you want to log out, you could use the power bottom to shut down the Virtual Desktop.

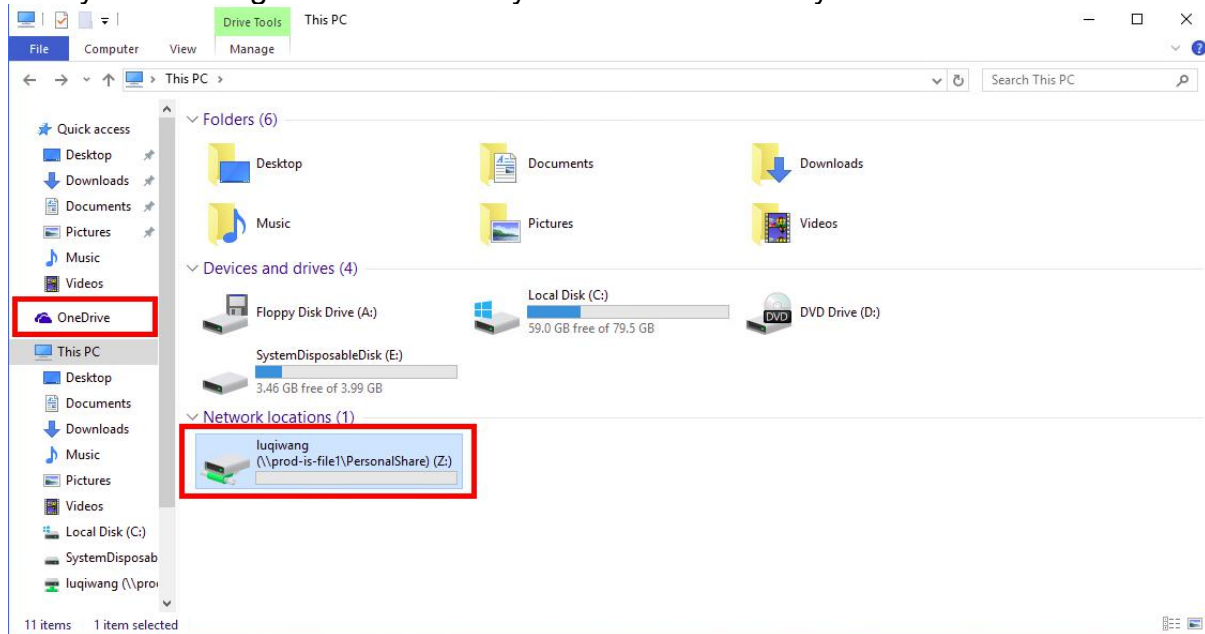


## How to save on a virtual desktop

Once you log out of a virtual desktop nothing will remain from your session, including files downloaded, saved recent files you created and software preferences. So here are two ways you could save on a virtual desk.

You could find a 2 GB Z: drive on your desktop.

Also you could login OneDrive with your INTL ID to save your documents.



## Need Help?

For help setting up or using VDI, contact the consultant at the ITS through the following method.

Service Hotline : 0571-87572669 (7\*24)

ITS Location : Room 112, Learning and Teaching Building North B

Service hours : 8:30 to 17:30, Monday to Sunday

Service Email : [itservices@intl.zju.edu.cn](mailto:itservices@intl.zju.edu.cn) / [its.intl@zju.edu.cn](mailto:its.intl@zju.edu.cn)

ITS website : <http://its.intl.zju.edu.cn>