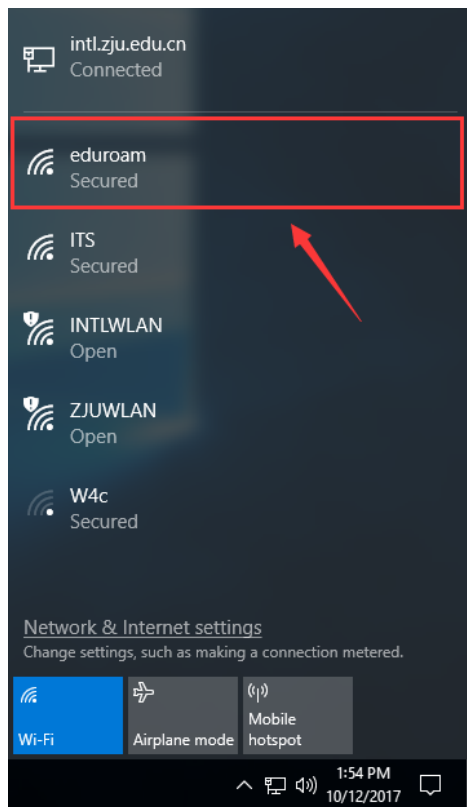


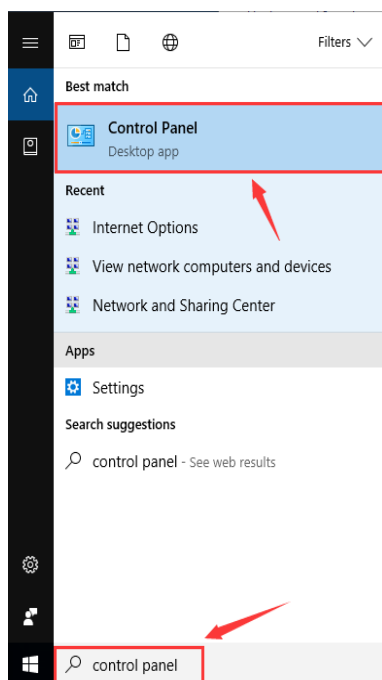
How to link eduroam in Win10

1. make sure that eduroam is within the signal coverage

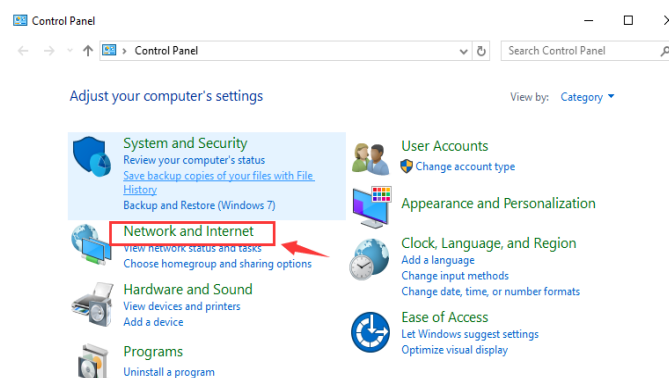


P1

2. search control panel, and enter control panel, choose Network and Internet

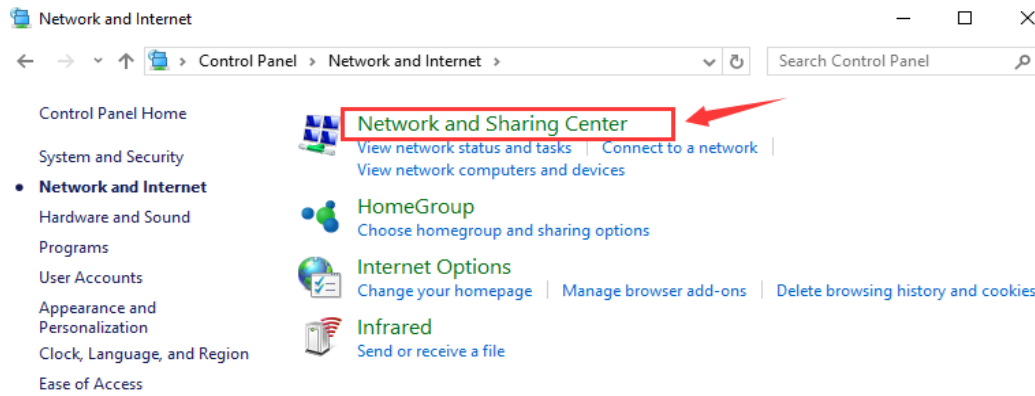


P2



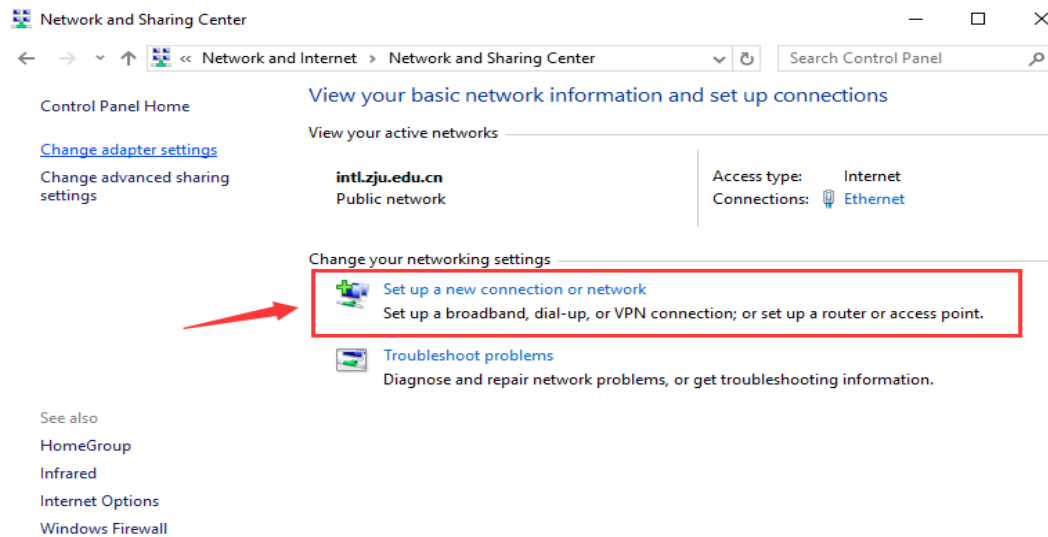
P3

3. choose Network Sharing Center

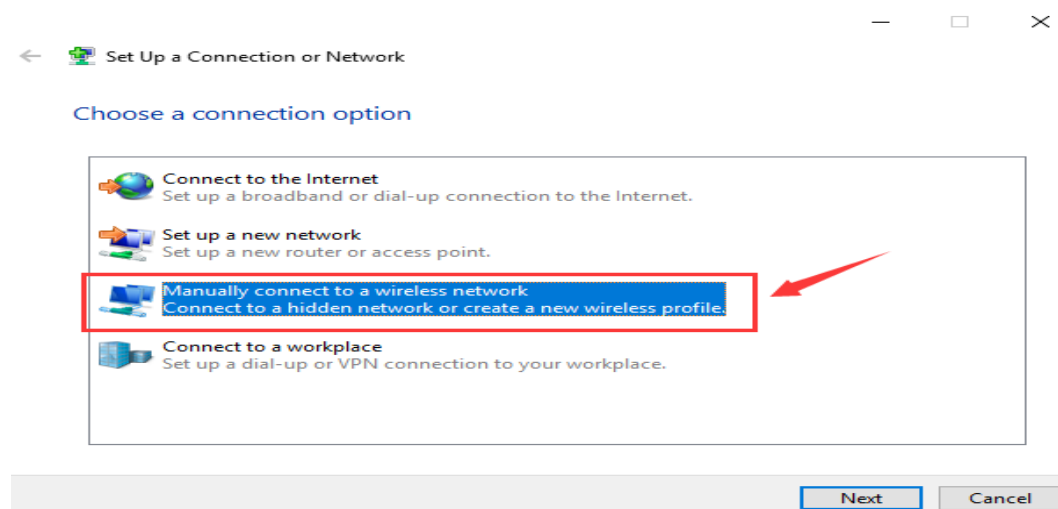


P4

4. choose Set up a new connecting or network first, then choose Manually connect to a wireless network

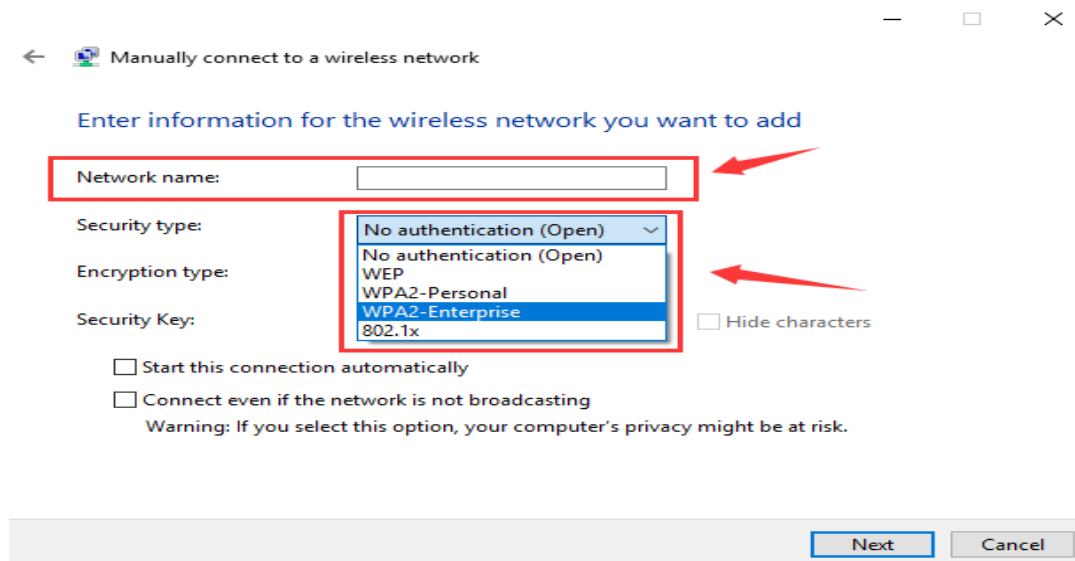


P5



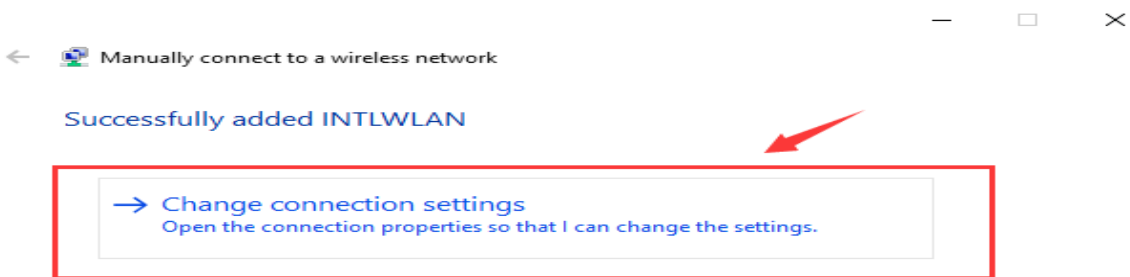
P6

5. change the Network name to eduroam change Security type to WPA2-Enterprise

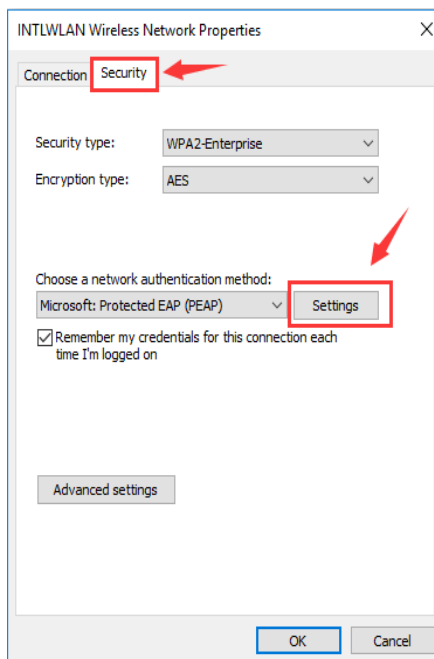


P7

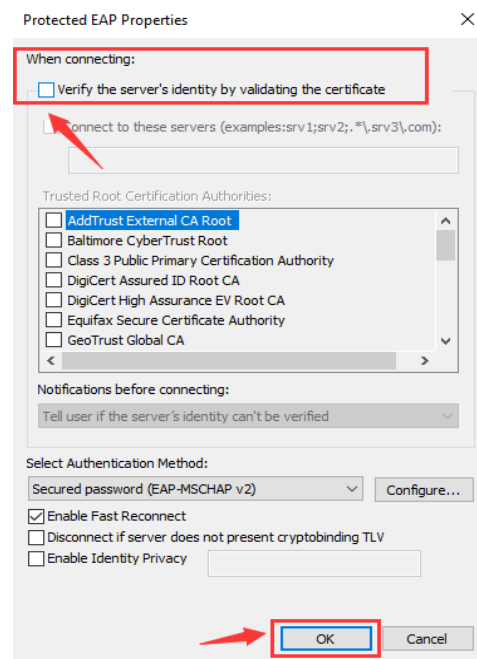
6. After successfully add a new WLAN, choose Change connection settings, follow the following steps and choose save credentials, Then use your INTL ID to login in with eduroam



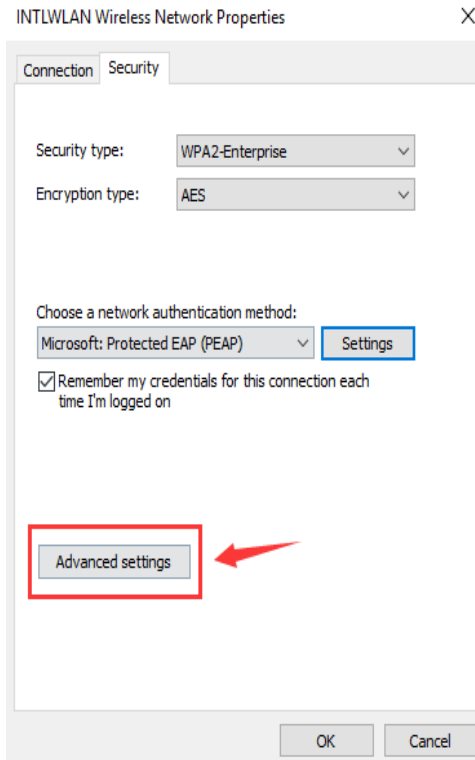
P8



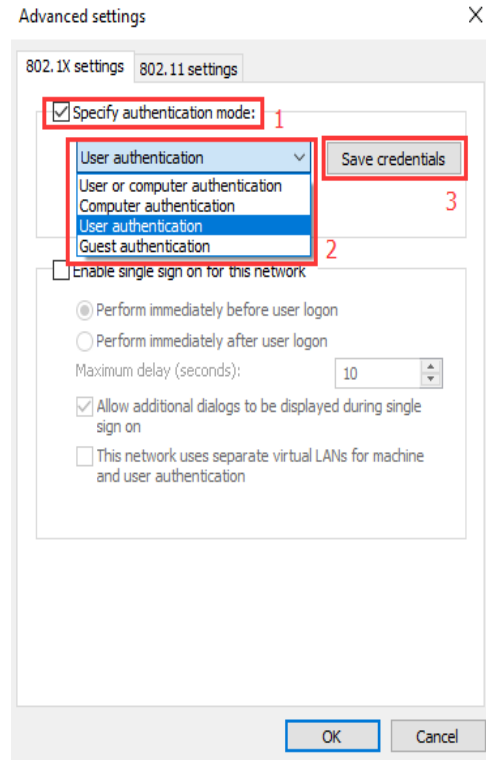
P9



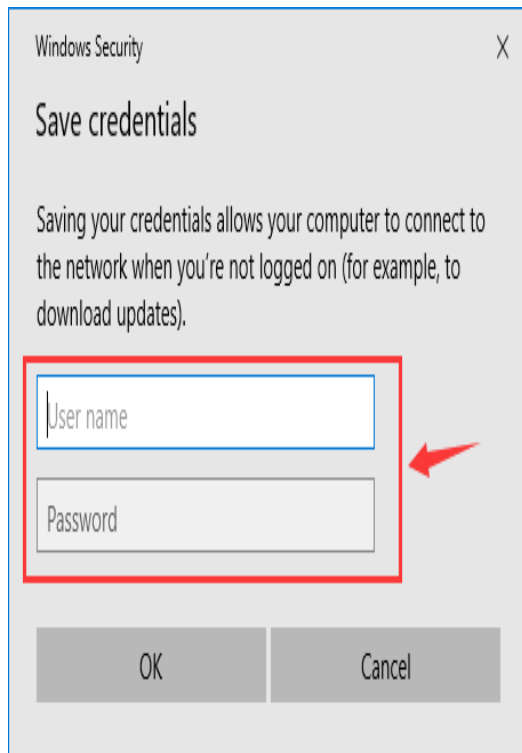
P10



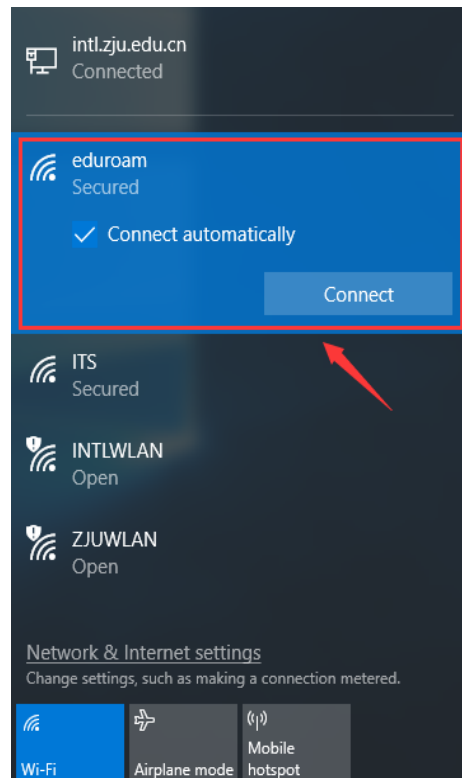
P11



P12



P13



P14